



**Less Cost. Less Weight.
A Better Boom.**



**Quick-Nut Stainless Steel Tube
Fluid Supply System**

A boom plumbing system designed for sprayers



Better Engineered Sprayer Components for Over 40 Years



Less cost. Less Weight. More Serviceable.

Thin Wall Stainless Steel Tube (SST) Boom Sections

- Large inside diameter accommodates higher flow rates with less pressure drop
- Boom tube sections are ready to assemble, with formed ends and punched nozzle body inlet holes
- No filings or burrs from threading or cutting to plug nozzles
- Lower cost compared to conventional plumbing systems
- Rigid and light-weight – significantly reducing boom weight
- Available in wide range of lengths and hole spacings

Weight Comparison

1" SST weighs
23% of Sct 40 pipe or
66% of aluminum pipe

1/2" SST weighs
28% of Sch 40 pipe or
80% of aluminum pipe

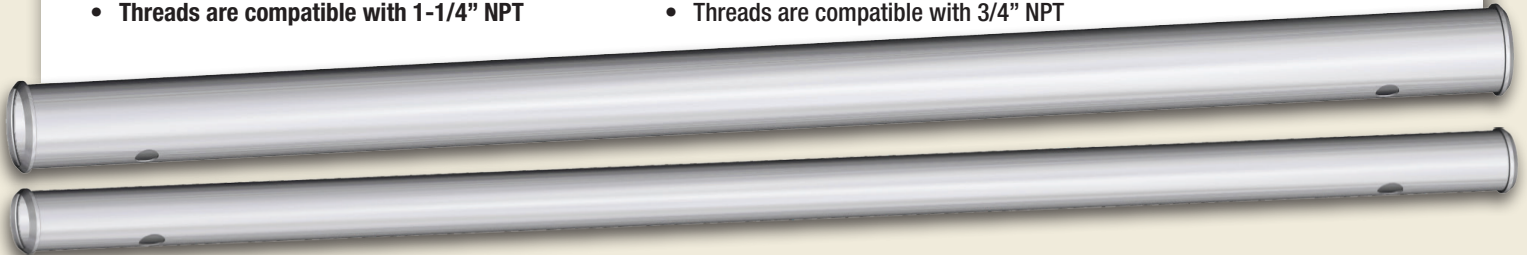
2 Sizes of Tube and Components

1" SST

- Same OD as 1" pipe (1.315" OD)
- Accommodates all standard 1" WB bodies
 - Uses 1" QN fittings
 - Available with 1" and 1-1/4" hose barb
- Threads are compatible with 1-1/4" NPT

1/2" SST

- Same OD as 1/2" pipe (0.840" OD)
- Accommodates all standard 1/2" WB bodies
 - Uses 1/2" QN fittings
 - Available with 1/2" and 3/4" hose barb
- Threads are compatible with 3/4" NPT



Boom End Flush Valve

Special short compact design to accommodate existing boom constructions
 Large internal diameter to maximize flow and minimize residue buildup
 Half-turn design allows for valve to be fully opened quickly
 Viton O-ring seal
 Chemical and UV resistant material
 Three versions available:

25175-V0 - 1" QN SST - Fits Wilger 1" Quick-Nut SST Tubing fittings

- Mates to 25171-00 boom end adapter - #218 O-Ring required (Part# 41210-03)

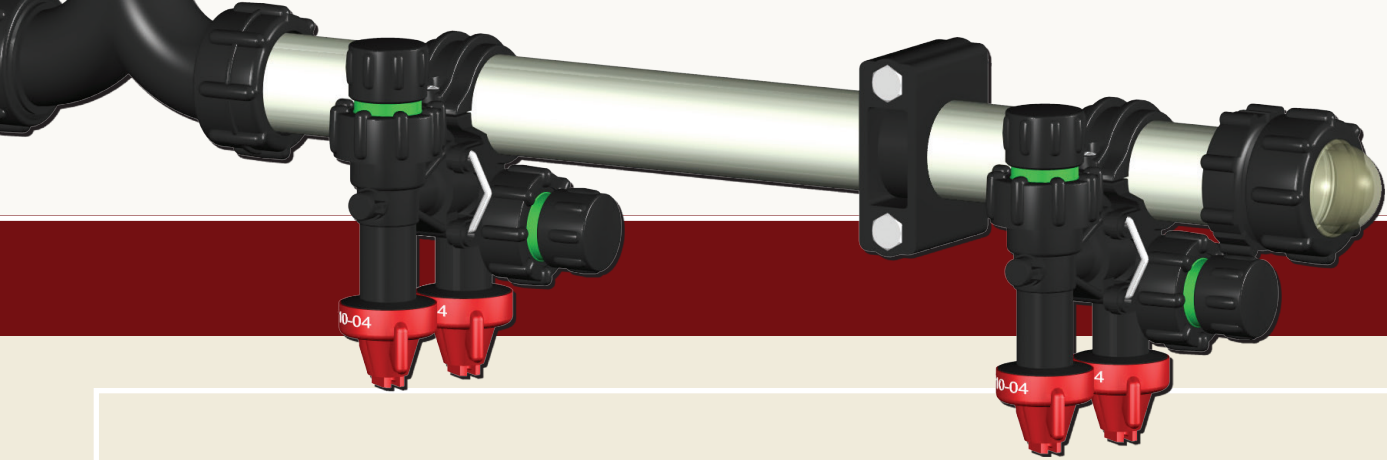
41402-V0 - TWS (CNH) - Fits CNH Patriot sprayers that have TWS thin-walled SS tubing fittings

- Mates to 41400-00 TWS tube end adapter - #219 o-ring required (Part# 25160-02)
- 41403-00 Adapter is also available to adapt the 41402-V0 valve to 1" NPTF

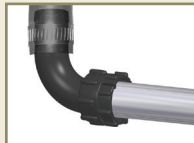
25176-V0 - 1" NPTF - Fits any 1" NPTM pipe

- Comes as an assembly and uses an adapter (25173-00) to convert the 25175-V0 valve to 1" NPT-F.

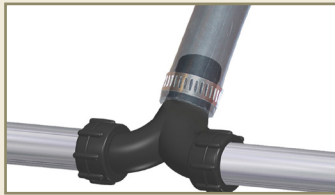




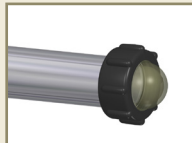
Broad Selection of Fittings and Tube Sizes Lets You Build the Optimal Boom for Your Sprayer



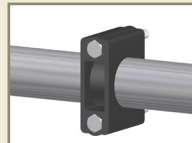
Hose Barb
Sweep 90 Degree



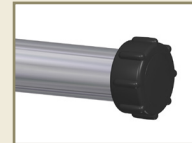
NPTM x NPTM x Hose Barb
Sweep Tee



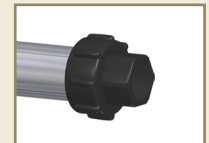
Clear Sight
Bulb Plug



Boom Clamps



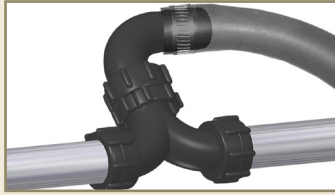
End Plug



3/4" Adapter



Hose Barb
Sweep 45 Degree



NPTM x NPTM x Joint Adapter
Sweep Tee
(Shown with Quick-Nut female
adapter, quick nut and hose barb
sweep 90 degree)



Hose Barb
Straight

QUICK-NUT SST Fittings

- Minimal pressure drop through sweep style 45° & 90° degree fittings.
- No tools needed for assembly. O-ring seals are easy to assemble & disassemble by hand.
- Saves assembly and/or disassembly time in the factory and the field.
- Clear Sight Bulb Plug shows sediment build-up in boom and is easily removable to allow boom clean-out and draining.
- Boom End Flush Valve allows effortless flushing of the boom.
- Quick-Nut fittings are compatible with CaselH Patriot® sprayers with thin-walled stainless steel tubing.

Typical assembly showing a 90 degree hose barb with a 90 degree sweep tee to each boom pipe.



Male SST
end adapter
connecting
joint adapter to
90 degree hose
barb

25161-01

25160-03

41210-03

25171-00

Quick-Nut adapter
connecting sweep tee to
hose barb

41210-03

25160-03

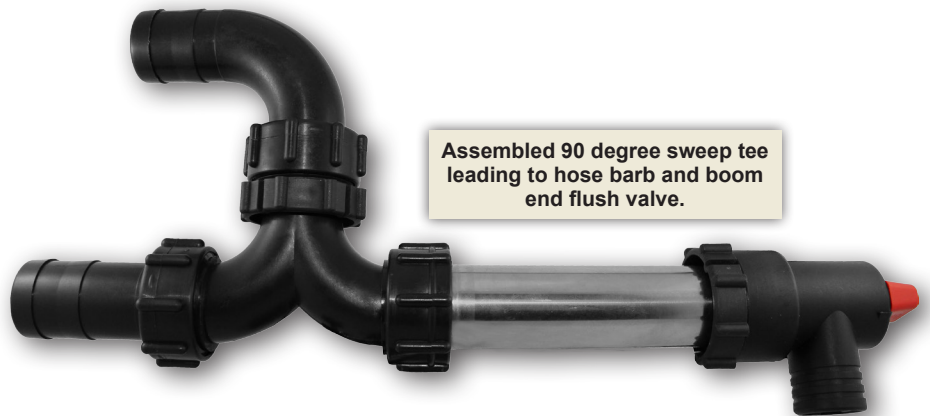
25172-00

Female SST end adapter
connecting sweep tee to
SST Boom

41210-03

25170-00

Assembled 90 degree sweep tee
leading to hose barb and boom
end flush valve.



Male SST end adapter
connecting to a boom
end flush valve

41210-03

25171-00

25175-v0

25160-01



Better Engineered Sprayer Components for Over 40 Years

QUICK-NUT Stainless Steel Tube Components

Quick-Nut Components



1" QUICK-NUT - Use with 1" SST Boom Tube (1.315" O.D.)

1" Hose Shank

- 25166-01 QN HOSE SHANK - 1" SST x 1" STRAIGHT SHANK
- 25167-01 QN HOSE SHANK - 1" SST x 1" SWEEP 90°
- 25168-00 QN SWEEP TEE - 1" HOSE SHANK x 1" SST x 1" SST

1-1/4" Hose Shank

- 25160-01 QN HOSE SHANK - 1" SST x 1-1/4" STRAIGHT SHANK
- 25161-01 QN HOSE SHANK - 1" SST x 1-1/4" SWEEP 90°
- 25162-01 QN HOSE SHANK - 1" SST x 1-1/4" SWEEP 45°
- 25169-00 QN SWEEP TEE - 1-1/4" HOSE SHANK x 1" SST x 1" SST

Other Fittings & Components

- 25160-03 QN 1" SST - NUT
- 25163-01 QN 1" SST - PLUG
- 25164-01 QN 1" SST x 3/4" NPT FE ADAPTER
- 25165-01 QN 1" SST SIGHT BULB PLUG, CLEAR
- 25172-00 QN SWEEP TEE - 1" JOINT ADAPTER x 1" SST x 1" SST
- 41210-03 O-RING, BUNA N #218
- 41210-V3 O-RING, VITON #218

Boom Mount Clamps

- 41590-00* BOOM MOUNT CLAMP - POLYGLASS for 1.25" O.D. TUBE
- 41591-00* BOOM MOUNT CLAMP - POLYGLASS for 1.315" O.D. TUBE & 1" SCHEDULE 40 PIPE

*Part number is for a single (half) clamp. Two (2) clamps are normally required.

QN to SST Connectors

- 25170-00 QN FEMALE BOOM END ADAPTER ASSY - 1.315" TUBE x 1" SST
- 25171-00 QN MALE BOOM END ADAPTER - 1.315" TUBE x 1" SST

1/2" QUICK-NUT - Use with 1/2" SST Boom Tube (0.840" O.D.)

1/2" Hose Shank

- 25120-01 QN HOSE SHANK - 1/2" SST x 1/2" STRAIGHT SHANK
- 25122-01 QN HOSE SHANK - 1/2" SST x 1/2" SWEEP 90°
- 25124-01 QN HOSE SHANK - 1/2" SST x 1/2" SWEEP 45°

3/4" Hose Shank

- 25121-01 QN HOSE SHANK - 1/2" SST x 3/4" STRAIGHT SHANK
- 25123-01 QN HOSE SHANK - 1/2" SST x 3/4" SWEEP 90°
- 25125-01 QN HOSE SHANK - 1/2" SST x 3/4" SWEEP 45°

Other Fittings and Components

- 25120-02 O-RING, BUNA N #116
- 25120-03 QN- 1/2" SST - NUT
- 25126-01 QN 1/2" SIGHT BULB
- 25128-00 QN SWEEP TEE - 1/2" SST x 1/2" SST x 1/2" SST
- QN to SST Connectors**
- 25129-00 QN FEMALE BOOM END ADAPTER ASSY - 0.840" TUBE x 1/2" SST
- 25130-00 QN MALE BOOM END ADAPTER - 0.840" TUBE x 1/2" SST

BOOM END FLUSH VALVES (BEFV)

- 25175-V0 QN BOOM-END FLUSH VALVE - 1" SST - VITON SEALS
- 25176-V0 QN BOOM-END FLUSH VALVE - 1" NPT FEMALE
- 25137-00 ADAPTER - QN SST BEFV TO 1" NPTF
- 25137-V0 ADAPTER KIT - QN SST BEFV TO 1" NPTF ADAPTER W/ VITON O-RING
- 25175-10 REPLACEMENT DUST CAP , BEFV

TWS Components (For Case Patriot)

- 41400-00 TWS TUBE END ADAPTER ASSY - 1.315" TUBE
- 41401-01 ADAPTER COUPLER BODY - TWS x 1 1/4" NPTF
- 41403-00 ADAPTER - TWS BEFV TO 1" NPTF
- 41403-V0 ADAPTER KIT - TWS BEFV TO 1" NPTF ADAPTER W/ VITON O-RING
- 41402-V0 TWS BOOM-END FLUSH VALVE - VITON SEALS

COMBO-JET® Tip-Caps & Nozzle Bodies



COMBO-RATE® Bodies and Turrets



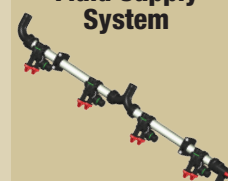
COMBO-RATE® Side Turrets



Boom End Flush Valves



Quick-Nut SST Fluid Supply System



Wilger Visual Ball Flow Indicators



CANADA
Wilger Industries Ltd.
 Site #412, Box 280, RR#4
 71ST St. & Highway 16W
 Saskatoon, SK, Canada S7K 3J7
 Phone: (306)242-4121 Fax: (306)242-4122
 E-mail: info@wilger.net

UNITED STATES
Wilger Inc.
 255 Seahorse Drive
 Lexington, TN, USA 38351-6538
 Phone: (877) 968-7695 / (731) 968-7695
 Fax: (877) 968-7613 / (713) 968-7613
 E-mail: wilgeresc@bellsouth.net

ARGENTINA
Wilger Argentina
 Mitre 697
 San Nicolas (2900)
 Bueno Aires, Argentina
 Phone +54 9 336 4596710
 E-mail: cjporras@gmail.com

www.wilger.net

Publication #10215-00
 Printed in Canada